



Grinder Tips

...for Tub and Horizontal Machines



Premium replacement parts for your tub or horizontal grinder

KenCoat™

Kennametal carbide overlay application technology

- Less downtime.
- Provides up to 50% greater wear life versus competitive embedded-style tips.
- Holds original shape longer to provide better and more consistent performance.

KenCast™

Best for asphalt, shingle, and other extreme applications

- Superior wear and fracture resistance.
- Combines the hardness of Kennametal cemented tungsten carbide with the toughness of air-hardening steel.

Brazed-On Carbide

Unmatched in the industry

- Produces more material at day's end.
- Premier-quality macrocrystalline tungsten carbide inserts, brazed onto an all-steel body; stay securely in place.
- Ideal for grinding big, clean wood material.



Grinder Tips

TABLE OF CONTENTS BY MACHINE MANUFACTURER

Bandit®	2
CBI® / CMI® / Rexworks® / Norkot®	3
Diamond Z® / Hogzilla® / W.H.O.® / FHE®	4
DuraTech®	5
Morbark®	6–7
KenCast™	8–9
Vermeer®	10–11
Precision Husky® / Toro® / Olathe®	12
Packer® / Rayco® / FAE® / ZEHR®	13
Weld-On Accessories	13

Kennametal Inc. encourages the safe use of its products.

To help avoid personal injury or damage to tools, please:

- Wear approved personal protection equipment, including eye and ear protection, steel-toed shoes, hard hat, and vest.
- Make sure tools are properly seated and securely retained.
- Do not strike tools with metal objects – carbide tips could shatter.
- Exercise care when removing tools.
- Inspect tools daily. Do not use dull, cracked, burred, or bent tools.
- Operate all machines with safety in mind.
- Stand clear of machines in use, and make sure protective guards are in place.
- Do not change tools when the drum is moving or still engaged.

**Model
Beast**

Part/Order Number
1611563 Flat Cutter
• abrasion-resistant
2041399 Flat Cutter
• impact-resistant



Lock Nut Part/Order Number **3525659**

**Model
Beast**

Part/Order Number
1850966 Splitter
• abrasion-resistant
2041397 Splitter
• impact-resistant



Lock Nut Part/Order Number **3525659**

**Model
Beast**

Part/Order Number
1998957 Shingle Splitter
• abrasion-resistant
2040927 Shingle Splitter
• impact-resistant



Lock Nut Part/Order Number **3525659**

**Model
Beast**

Part/Order Number
1999845 Shingle Fan
• 2" fan
• KenCast™ technology
• non-rotating



Lock Nut Part/Order Number **3525659**

**Model
Beast**

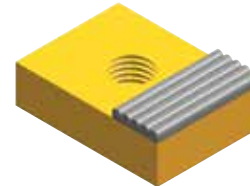
Part/Order Number
1594658 Bullet Bit
• exceptionally durable



Lock Nut Part/Order Number **3525659**

**Model
Beast**

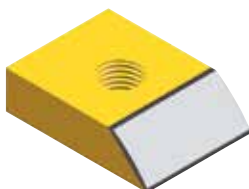
Part/Order Number
1931025 Raker
• 3/4" x 2" x 2.8"
• KenCoat™ overlay
• 3/4" – 10 UNC thread



Bolt Part/Order Number **3668832**

**Model
Beast**

Part/Order Number
2034671 Raker
• beveled edge
• 3/4" – 10 UNC thread

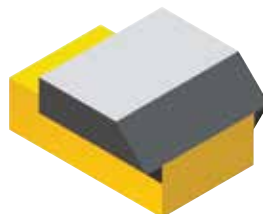


Bolt Part/Order Number **3668832**

**Model
Beast**

Part/Order Number
1999848 Raker
• KenCast technology with beveled edge
• 3/4" – 10 UNC thread

See pages 8–9 for more KenCast details.

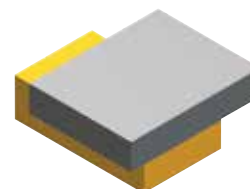


Bolt Part/Order Number **3668832**

**Model
Beast**

Part/Order Number
2450150 Shingle Raker
• KenCast technology with squared edge
• 3/4" – 10 UNC thread

See pages 8–9 for more KenCast details.

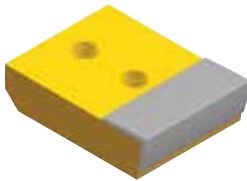


Bolt Part/Order Number **3668832**

See fasteners on page 12.

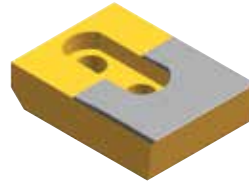
Model CBI
4800 / 5060

Part/Order Number
6474153 Striker (MTO)
• 8" x 5-7/8" x 2-1/4" (1-1/4" – 7 thread)
• 2-side KenCoat™ overlay



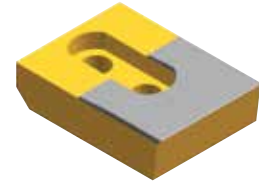
Model CBI
4800 / 5060

Part/Order Number
5679245 Striker (MTO)
• 8" x 5-7/8" x 2" (1-5/16" holes)
• KenCast™ technology



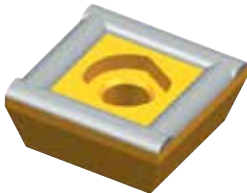
Model CBI
4800 / 5060

Part/Order Number
2652332 Striker
• 9" x 5-7/8" x 2" (1-5/16" holes)
• KenCast technology



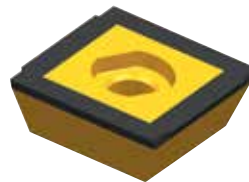
Model CMI / Rexworks / Norkot
Maxi / Biogrind

Part/Order Number
1837762
• 2.5" x 2.5"
• 4-edge KenCoat overlay (5/8" ID)



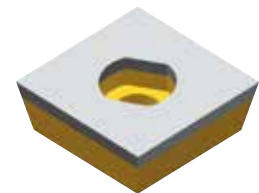
Model CMI / Rexworks / Norkot
Maxi / Biogrind

Part/Order Number
1837823 (shown)
• 2.5" x 2.5"
• 4-edge brazed-on carbide inserts (5/8" ID)
1837824
• 2.5" x 2.5"
• 2-edge brazed-on carbide inserts (5/8" ID)



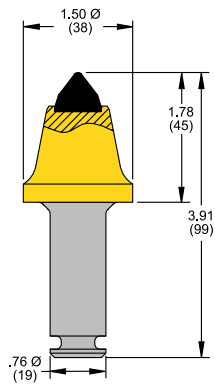
Model CMI / Rexworks / Norkot
Maxi / Biogrind

Part/Order Number
1012625 (shown)
• 2.5" x 2.5"
• KenCast technology (5/8" ID)
2260875
• 2.5" x 2.5"
• KenCast technology (3/4" ID)



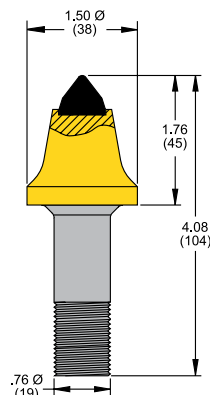
Model CMI / Rexworks / Norkot
Maxi / Biogrind

Part/Order Number
1010910 C3R Tool
• for soft to medium or abrasive cutting conditions



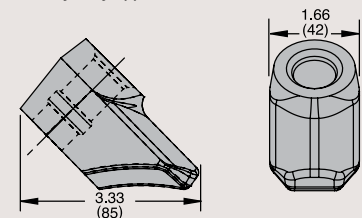
Model CMI / Rexworks / Norkot
Maxi / Biogrind

Part/Order Number
1010734 C3T Tool
• for soft to medium or abrasive cutting conditions
• threaded nut included



Model CMI / Rexworks / Norkot
Maxi / Biogrind

Part/Order Number
1886760 C3RB Block
• for heavy-duty applications

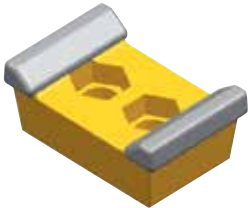


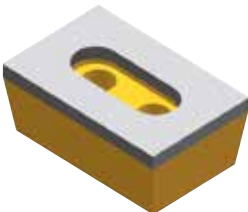
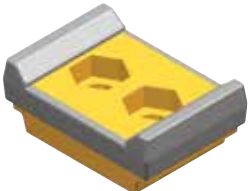


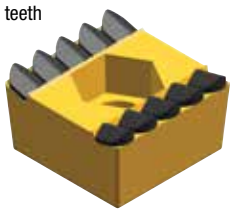

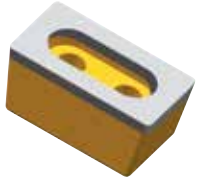


Model CMI / Rexworks / Norkot
Maxi / Biogrind

Part/Order Number
1012120 C3R Retainer
• lock ring



See fasteners on page 12.

<p>Model All Diamond Z / Hogzilla</p> <p>Part/Order Number 1835079 (shown)</p> <ul style="list-style-type: none"> • 2-bolt – 2" on centers • 3.5" x 5.5" • 4-side KenCoat™ overlay with corners <p>2993224</p> <ul style="list-style-type: none"> • 2-bolt – 2" on centers • 3.5" x 5.5" • 4-side KenCoat overlay without corners 	<p>Model All Diamond Z / Hogzilla</p> <p>Part/Order Number 1930338 (shown)</p> <ul style="list-style-type: none"> • 2-bolt – 2" on centers • 3.5" x 5.5" • 6-side KenCoat overlay <p>2434936</p> <ul style="list-style-type: none"> • 2-bolt – 2" on centers • 3.5" x 5.5" • 8-side KenCoat overlay with face 	<p>Model All Diamond Z / Hogzilla</p> <p>Part/Order Number 2046932 Ripper (shown)</p> <ul style="list-style-type: none"> • 2-bolt – 2" on centers • 3.5" x 5.4" • abrasion-resistant <p>2394828 Ripper</p> <ul style="list-style-type: none"> • 2-bolt – 2" on centers • 3.5" x 5.4" • impact-resistant 
<p>Model All Diamond Z / Hogzilla</p> <p>Part/Order Number 1981905</p> <ul style="list-style-type: none"> • 2-bolt – 2" on centers • 3.5" x 5.5" • KenCast™ technology 	<p>Model All Hogzilla</p> <p>Part/Order Number 3776434</p> <ul style="list-style-type: none"> • 2-bolt – 1-5/8" on centers • 2.9" x 4.3" • 6-side KenCoat overlay 	<p>KenCast™ tip after more than 40 hours of highly abrasive shingle grinding — shows only moderate wear.</p>  <p><i>See pages 8–9 for more information on KenCast.</i></p>
<p>Model P-10-12 W.H.O. / FHE</p> <p>Part/Order Number 2034217 (shown)</p> <ul style="list-style-type: none"> • 1-bolt • 3" x 3" • 8-side KenCoat overlay with face and sides <p>1611573</p> <ul style="list-style-type: none"> • 1-bolt • 3" x 3" • 6-side KenCoat overlay with face 	<p>Model P-10-12 W.H.O. / FHE</p> <p>Part/Order Number 2264823 Ripper (shown)</p> <ul style="list-style-type: none"> • 1-bolt • 2.7" x 2.7" • impact-resistant • 10 carbide teeth <p>2254784 Ripper</p> <ul style="list-style-type: none"> • for super-aggressive cutting • 1-bolt • 2.7" x 2.7" • impact-resistant • 6 carbide teeth 	<p>Model P-10-12 W.H.O. / FHE</p> <p>Part/Order Number 1931517</p> <ul style="list-style-type: none"> • 2-bolt – 1-5/16" on centers • 2" x 3.5" • 6-side KenCoat overlay • 1.5" mounted  <p>Model P-10-12 W.H.O. / FHE</p> <p>Part/Order Number 1323300</p> <ul style="list-style-type: none"> • 2-bolt – 1-5/16" on centers • 2" x 3.5" • KenCast technology • 1.5" mounted 

See fasteners on page 12.

Model
3010 / 4012

Part/Order Number
2034217 (shown)

- 1-bolt
- 3" x 3"
- 8-side KenCoat™ overlay with face and sides

1611573

- 1-bolt
- 3" x 3"
- 6-side KenCoat overlay with face



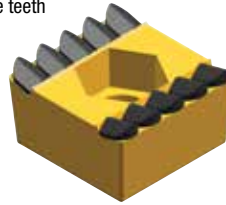
Model
3010 / 4012

Part/Order Number
2264823 Ripper (shown)

- 1-bolt
- 2.7" x 2.7"
- impact-resistant
- 10 carbide teeth

2254784 Ripper

- for super-aggressive cutting
- 1-bolt
- 2.7" x 2.7"
- impact-resistant
- 6 carbide teeth



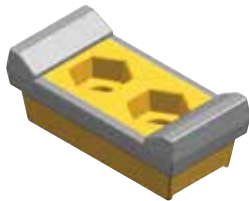
Model
HD 8-12

Part/Order Number
2402073 (shown)

- 2-bolt – 1-1/2" on centers
- 2.3" x 4.5"
- 6-side KenCoat overlay with rails

2402030

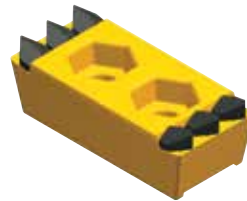
- 2-bolt – 1-1/2" on centers
- 2.3" x 4.5"
- 8-side KenCoat overlay with face and rails



Model
HD 8-12

Part/Order Number
3788583 Ripper

- 2-bolt – 1-1/2" on centers
- 1.9" x 4.1"
- 2-side brazed with rails



Tooling shown on page fits machines manufactured by Duratech®.

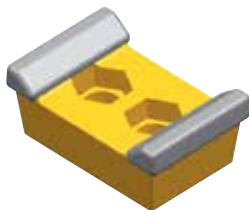
Model
Horizontal Grinders

Part/Order Number
1835079 (shown)

- 2-bolt – 2" on centers
- 3.5" x 5.5"
- 4-side KenCoat overlay with corners

2993224

- 2-bolt – 2" on centers
- 3.5" x 5.5"
- 4-side KenCoat overlay without corners



Model
Horizontal Grinders

Part/Order Number
1930338 (shown)

- 2-bolt – 2" on centers
- 3.5" x 5.5"
- 6-side KenCoat overlay

2434936

- 2-bolt – 2" on centers
- 3.5" x 5.5"
- 8-side KenCoat overlay with face



Model
Horizontal Grinders

Part/Order Number
2046932 Ripper (shown)

- 2-bolt – 2" on centers
- 3.5" x 5.4"
- abrasion-resistant

2394828 Ripper

- 2-bolt – 2" on centers
- 3.5" x 5.4"
- impact-resistant



See fasteners on page 12.

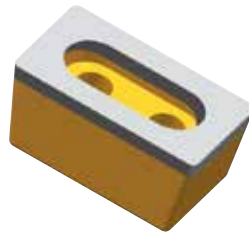
Model
950 / 1000 / 1100 / 1200 / 2600 / 3600

- Part/Order Number**
1931517
- 2-bolt – 1-5/16" on centers
 - 2" x 3.5"
 - 6-side KenCoat™ overlay
 - 1.5" mounted



Model
1100 / 1200 / 3600

- Part/Order Number**
1323300
- 2-bolt – 1-5/16" on centers
 - 2" x 3.5"
 - KenCast™ technology
 - 1.5" mounted



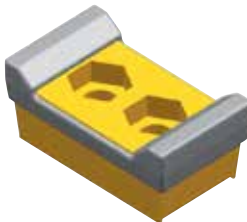
Model
1200

- Part/Order Number**
3384637
- 2-bolt – 1-1/2" on centers
 - 2.7" x 3.4"
 - 6-side KenCoat overlay
 - flat back



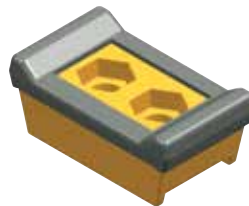
Model
1200XL / 1250 / 1300 / 3800 / 4600XL

- Part/Order Number**
1855230
- 2-bolt – 1-11/16" on centers
 - 2.8" x 4.8"
 - 6-side KenCoat overlay with rails



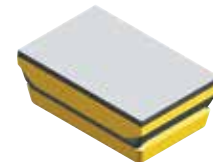
Model
1200XL / 1250 / 1300 / 3800 / 4600XL

- Part/Order Number**
3134428
- 2-bolt – 1-11/16" on centers
 - 3" x 5.1"
 - 8-side KenCoat overlay



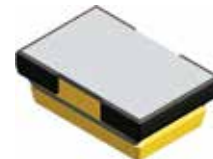
Model
1200XL / 1250 / 1300 / 3800 / 4600XL

- Part/Order Number**
3330563
- 2-bolt – 1-11/16" on centers
 - 3" x 4.8"
 - KenCast technology solid face (threaded 3/4"-16 lugs in back)



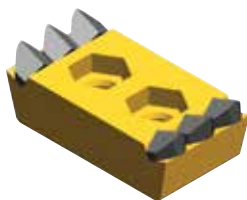
Model
1200XL / 1250 / 1300 / 3800 / 4600XL

- Part/Order Number**
4158315
- 2-bolt – 1-11/16" on centers
 - 3.3" x 5"
 - KenCast technology with wraparound hardfacing



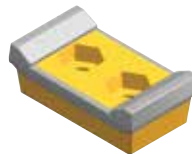
Model
1200XL / 1250 / 1300 / 4600XL

- Part/Order Number**
2437966 Ripper
- 2-bolt – 1-11/16" on centers
 - 2.8" x 5.1"
 - impact-resistant



Model
1400 / 1500

- Part/Order Number**
6065225
- 2-bolt – 2" on centers
 - 2.8" x 5.3"
 - 6-side KenCoat overlay
 - flat back



Model
1400 / 1500

- Part/Order Number**
3127912 Ripper
- 2-bolt – 2" on centers
 - 2.7" x 5.1"
 - impact-resistant
 - flat back



Tooling shown on page fits machines manufactured by Morbark®.

See fasteners on page 12.

Model
1600 / 6600

- Part/Order Number**
2604148 (shown)
- 2-bolt – 2" on centers
 - 3" x 6.5"
 - 8-side KenCoat™ overlay
 - flat back

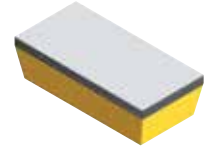
- 2604163**
- 2-bolt – 2" on centers
 - 3" x 6.5"
 - 6-side KenCoat overlay
 - flat back


Model
1600 / 6600

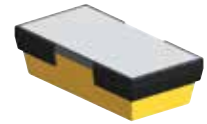
- Part/Order Number**
2607173 Ripper
- 2-bolt – 2" on centers
 - 3" x 6.5"
 - impact-resistant
 - flat back


Model
1600 / 6600

- Part/Order Number**
2885057
- 2-bolt – 2" on centers
 - 3" x 6.5"
 - KenCast™ technology
 - solid face
 - flat back


Model
1600 / 6600

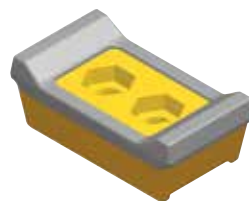
- Part/Order Number**
3838092
- 2-bolt – 2" on centers
 - 3.3" x 6.5"
 - KenCast technology
 - solid face with wraparound hardfacing


Model
3600 / 4600

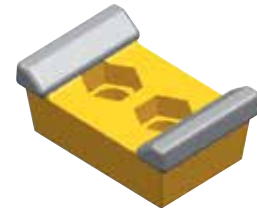
- Part/Order Number**
3117793
- 2-bolt – 1-9/16" on centers
 - 2.8" x 4"
 - 8-side KenCoat overlay with rails


Model
5600 / 7600

- Part/Order Number**
3077198
- 2-bolt – 2" on centers
 - 3.3" x 6.3"
 - 8-side KenCoat overlay with rails


Model
5600 (early models)

- Part/Order Number**
1835079 (shown)
- 2-bolt – 2" on centers
 - 3.5" x 5.5"
 - 4-side KenCoat overlay with corners
- 2993224**
- 2-bolt – 2" on centers
 - 3.5" x 5.5"
 - 4-side KenCoat overlay without corners


Model
5600 (early models)

- Part/Order Number**
1930338 (shown)
- 2-bolt – 2" on centers
 - 3.5" x 5.5"
 - 6-side KenCoat overlay
- 2434936**
- 2-bolt – 2" on centers
 - 3.5" x 5.5"
 - 8-side KenCoat overlay with face


Model
5600 (early models)

- Part/Order Number**
2046932 Ripper (shown)
- 2-bolt – 2" on centers
 - 3.5" x 5.4"
 - abrasion-resistant
- 2394828 Ripper**
- 2-bolt – 2" on centers
 - 3.5" x 5.4"
 - impact-resistant



Tooling shown on page fits machines manufactured by Morbark®.

See fasteners on page 12.

KenCast™

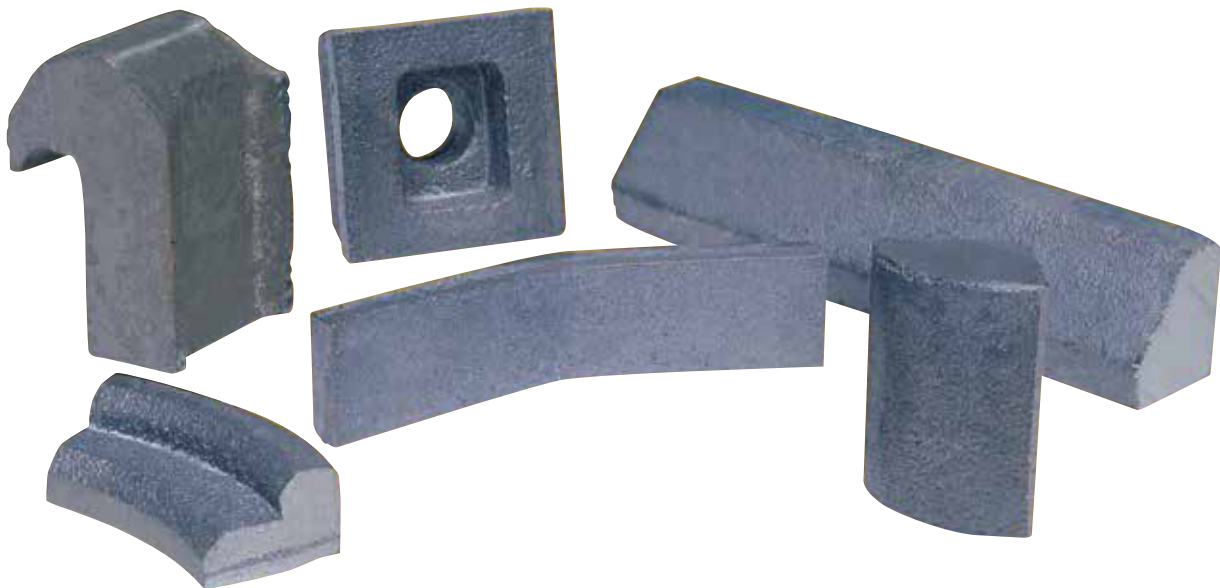
Any Wear. Any Time.

Wear.

One small word that describes a big problem for most equipment operators. Perhaps nothing is more troublesome, or more damaging, to virtually any equipment in any application, than wear. You experience it every day, and over time, it can add up to hefty equipment repair and replacement costs.

We understand wear. And we understand how important it is to you and your business to prevent wear damage to your equipment. That's why we developed KenCast™.

Whether you're working above ground or underground, on the road or in the pit, crushing rock or pushing snow...no matter what your application or equipment... Kennametal has (or can custom-make) a KenCast part to fit your particular wear problem!



KenCast™ Wear Protection

KenCast is a unique wear protection material that can significantly increase tool life — and productivity.

Product Versatility

KenCast is exceptionally versatile. It can fit nearly any machine for nearly any application, with only a few limitations on size and shape. It is easily welded or attached mechanically into position.

Standard part sizes and shapes available:

- Thickness – minimum 1/4" to a maximum 8"
- Width – up to maximum 20"
- Length – up to maximum of 20"



This new grinder hammer tip made with KenCast is used in horizontal and tub grinders in the recycling industry. As you can see, the outer surface is smooth prior to use. Cut-away shows the KenCast carbide particles embedded in the steel.



This is a KenCast grinder hammer tip after 40 hours of use in a highly abrasive asphalt shingle recycling application. Notice that the prominent carbide particles have sustained only moderate wear. This particular hammer tip continued grinding for a total of 90 hours, outperforming and lasting up to 10 times longer than competitive tools!

Model
TG-400 / 525

Part/Order Number **2034217** (shown) with Hammer Body

- 1-bolt
- 3" x 3"
- 8-side KenCoat™ overlay with face and sides

1611573

- 1-bolt
- 3" x 3"
- 6-side KenCoat overlay with face



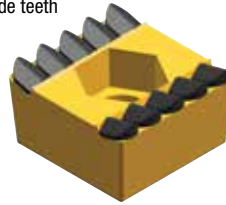
Model
TG-400 / 525

Part/Order Number **2264823** Ripper (shown) with Hammer Body

- 1-bolt
- 2.7" x 2.7"
- impact-resistant
- 10 carbide teeth

2254784 Ripper

- for super-aggressive cutting
- 1-bolt
- 2.7" x 2.7"
- impact-resistant
- 6 carbide teeth



Model
TG-5000 / 9000 / HG-365 / 525 / 4000 / 6000

Part/Order Number **3880080** (shown) with Duplex Drum

- 1-bolt
- 3.3" x 3.8"
- 8-side KenCoat overlay with sides and rails

3880079

- 1-bolt
- 3.3" x 3.8"
- 6-side KenCoat overlay with rails



Model
HG-365 / 525 / 4000 / 6000

Part/Order Number **3901860** Ripper with Duplex Drum

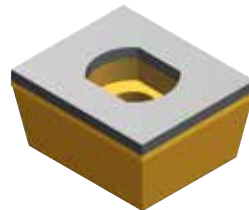
- 1-bolt
- 3" x 3.7"
- impact-resistant
- with rails



Model
TG-9000 / HG-365 / 525 / 4000 / 6000

Part/Order Number **1985773** with Duplex Drum

- 1-bolt
- 3.3" x 3.8"
- KenCast technology
- flat back



Model
TG-5000 / HG-200

Part/Order Number **1931517** with Duplex Drum

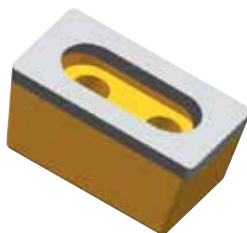
- 2-bolt – 1-5/16" on centers
- 2" x 3.5"
- 6-side KenCoat overlay
- 1.5" mounted



Model
TG / HG

Part/Order Number **1323300** with Duplex Drum

- 2-bolt – 1-5/16" on centers
- 2" x 3.5"
- KenCast technology
- 1.5" mounted



“Kennametal carbide grinder tips have sliced our tool-replacement costs by almost 70%.”

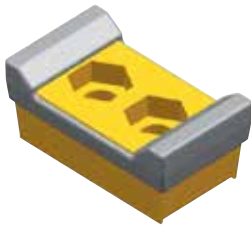
Terry Kane, Owner
Georgia Mountain Grinding & Recycling
Blairsville, Georgia

See fasteners on page 12.

Model
TG-400 / 525

Part/Order Number with Hammer Body
1855230

- 2-bolt – 1-11/16" on centers
- 2.8" x 4.8"
- 6-side KenCoat™ overlay with rails



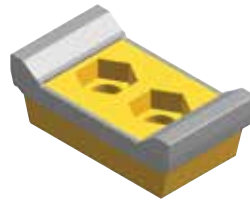
Model
TG-400 / 525 / 7000

Part/Order Number with Hammer Body
2418497 (shown)

- 2-bolt – 1-11/16" on centers
- 2.8" x 5.1"
- 6-side KenCoat overlay
- flat back

2434940

- 2-bolt – 1-11/16" on centers
- 2.8" x 5.1"
- 8-side KenCoat overlay with face
- flat back



Model
TG-400 / 525

Part/Order Number with Hammer Body
2437966 Ripper

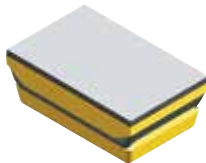
- 2-bolt – 1-11/16" on centers
- 2.8" x 5.1"
- impact-resistant



Model
TG-400 / 525

Part/Order Number with Hammer Body
3330563

- 2-bolt – 1-11/16" on centers
- 3" x 4.8"
- KenCast™ technology solid face (threaded 3/4"-16 lugs in back)



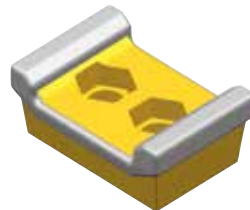
Model
TG-800 / 1000 / 8000 / 9000

Part/Order Number with Hammer Body
1930338 (shown)

- 2-bolt – 2" on centers
- 3.5" x 5.5"
- 6-side KenCoat overlay

2434936

- 2-bolt – 2" on centers
- 3.5" x 5.5"
- 8-side KenCoat overlay with face



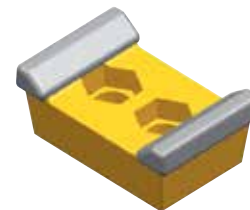
Model
TG-800 / 1000 / 8000 / 9000

Part/Order Number with Hammer Body
1835079 (shown)

- 2-bolt – 2" on centers
- 3.5" x 5.5"
- 4-side KenCoat overlay with corners

2993224

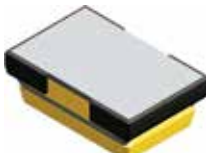
- 2-bolt – 2" on centers
- 3.5" x 5.5"
- 4-side KenCoat overlay without corners



Model
TG-400 / 525

Part/Order Number with Hammer Body
4158315

- 2-bolt – 1-11/16" on centers
- 3.3" x 5"
- KenCast technology with wraparound hardfacing



Model
TG-800 / 1000 / 8000 / 9000

Part/Order Number with Hammer Body
2046932 Ripper (shown)

- 2-bolt – 2" on centers
- 3.5" x 5.4"
- abrasion-resistant

2394828 Ripper

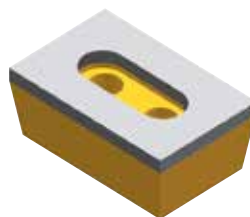
- 2-bolt – 2" on centers
- 3.5" x 5.4"
- impact-resistant



Model
TG-800 / 1000 / 8000 / 9000

Part/Order Number with Hammer Body
1981905

- 2-bolt – 2" on centers
- 3.5" x 5.5"
- KenCast technology



See fasteners on page 12.

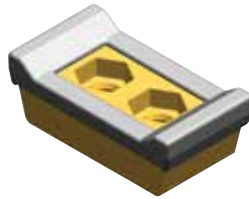
Model
837 / 867 / 1000 / 2000

- Part/Order Number**
2034217 (shown)
- 1-bolt
 - 3" x 3"
 - 8-side KenCoat overlay with face and sides
- 1611573**
- 1-bolt
 - 3" x 3"
 - 6-side KenCoat™ overlay with face



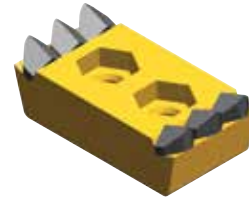
Model
4000 / 5000 / 5100

- Part/Order Number**
2434940 (shown)
- 2-bolt – 1-11/16" on centers
 - 2.8" x 5.1"
 - 8-side KenCoat overlay with face
 - flat back
- 2418497**
- 2-bolt – 1-11/16" on centers
 - 2.8" x 5.1"
 - 6-side KenCoat overlay
 - flat back



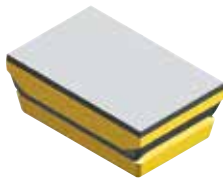
Model
4000 / 5000 / 5100

- Part/Order Number**
2437966 Ripper
- 2-bolt – 1-11/16" on centers
 - 2.8" x 5.1"
 - impact-resistant



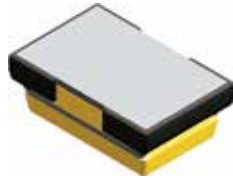
Model
4000 / 5000 / 5100

- Part/Order Number**
3330563
- 2-bolt – 1-11/16" on centers
 - 3" x 4.8"
 - KenCast technology solid face (threaded 3/4" - 16 lugs in back)



Model
4000 / 5000 / 5100

- Part/Order Number**
4158315
- 2-bolt – 1-11/16" on centers
 - 3.3" x 5"
 - KenCast technology with wraparound hardfacing



Now offering premium quality fasteners for your grinders

EXPERIENCED STAFF

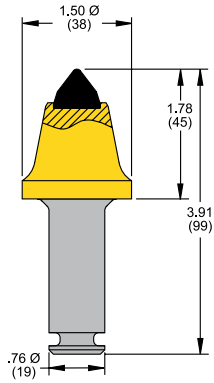
FAST DELIVERY



Order from stock by Noon EST for same-day shipment.
Call Customer Service at 800 458 3608 or 866 692 5434.

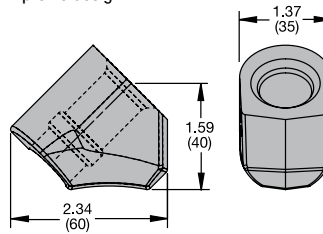
Packer

Part/Order Number
1010910 C3R Tool
 • for soft to medium or abrasive cutting conditions



Packer

Part/Order Number
1012278 C10 Block
 • for light-duty applications
 • slim-profile design



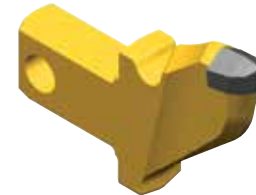
Packer

Part/Order Number
1012120 C3R Retainer
 • lock ring



Model
Forestry Mowers

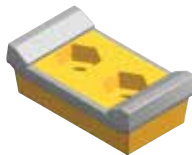
Part/Order Number
1785758
 • mower tip assembly
 • impact-resistant



Model
4000

ZEHR

Part/Order Number
2271876
 • 2-bolt – 2" on centers
 • 2.8" x 5.3"
 • 6-side
 KenCoat™ overlay
 • flat back



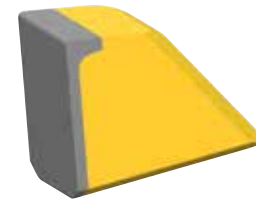
Weld-On Accessories

Part/Order Number
2882750 Shark Tooth
 • for drum rotors
 • prevents material build-up on drum
 • impact-resistant



Weld-On Accessories

Part/Order Number
2492967 Shark Tooth
 • for drum rotors
 • for severe applications
 • prevents material build-up on drum
 • KenCast™ technology



Model
4000

ZEHR

Part/Order Number
3127912 Ripper
 • 2-bolt – 2" on centers
 • 2.7" x 5.1"
 • impact-resistant
 • flat back



Weld-on wear protection

ELIMINATES COSTLY HARDFACING



KenCast is an exclusive Kennametal product. We take tungsten carbide particles of varying sizes and metallurgically bond them to air-hardened steel. This combination of steel's practicality with carbide's toughness creates a wear part that withstands extremely abrasive and high-impact applications.

KenCast helps equipment last longer... in many cases, a lot longer. That means you save money with reduced downtime, repair costs, and inventory.

Kennametal Inc. (USA)

Mining and Construction Division
Phone: 800 458 3608

Kennametal Australia Pty. Ltd.

Phone: (61) 7 3801 5844

Kennametal Inc. (Canada)

Phone: 800 458 3608

Kennametal Xuzhou Ltd. (Beijing)

Representative Office Phone: (86) 10 8563 4883

Kennametal Inc. (France)

Phone: (33) 387 8965 93

Kennametal GmbH & Co. KG (Europe)

Phone: (49) 6172 28 52 20

Kennametal Japan Ltd. (Tokyo)

Phone: (81) 3 3820 2855

Kennametal Korea Ltd.

Phone: (82) 2 2109 6100

Kennametal (Malaysia) Sdn. Bhd.

Phone: (6) 03 5569 9080

Kennametal Sp. z O.O. (Poland)

Phone: (48) 32 47 89 104

Kennametal (Singapore) Pte. Ltd.

Phone: (65) 6 265 9222

Kennametal South Africa Pty. Ltd.

Phone: (27) 11 397 3540

Kennametal Hardpoint Taiwan Inc.

Phone: (886) 2 2523 3660

Kennametal (Thailand) Co. Ltd.

Phone: (662) 377 1501

Grinder Tips

Kennametal

The proven global leader in the design, manufacture, implementation, and sale of premium-quality tooling systems for underground and surface mining, road rehabilitation, aggregates production, and waste recycling.

Customer Service:**+1 800 458 3608****k-mcs-usacan.service@kennametal.com****kennametal.com**

Kennametal Inc.

1600 Technology Way | Latrobe, PA 15650 USA

Kennametal, the stylized K, KenCast, and KenCoat are trademarks of Kennametal Inc., and are used as such herein. Bandit, CBI, CMI, Rexworks, Norkot, Diamond Z, Hogzilla, W.H.O., FHE, Duratech, Morbark, Vermeer, Precision Husky, Toro, Olathe, Packer, Rayco, FAE, and ZEHR are registered trademarks of their respective owners and are used as such herein.

©2018 Kennametal Inc. | All rights reserved. | B-18-05710EN