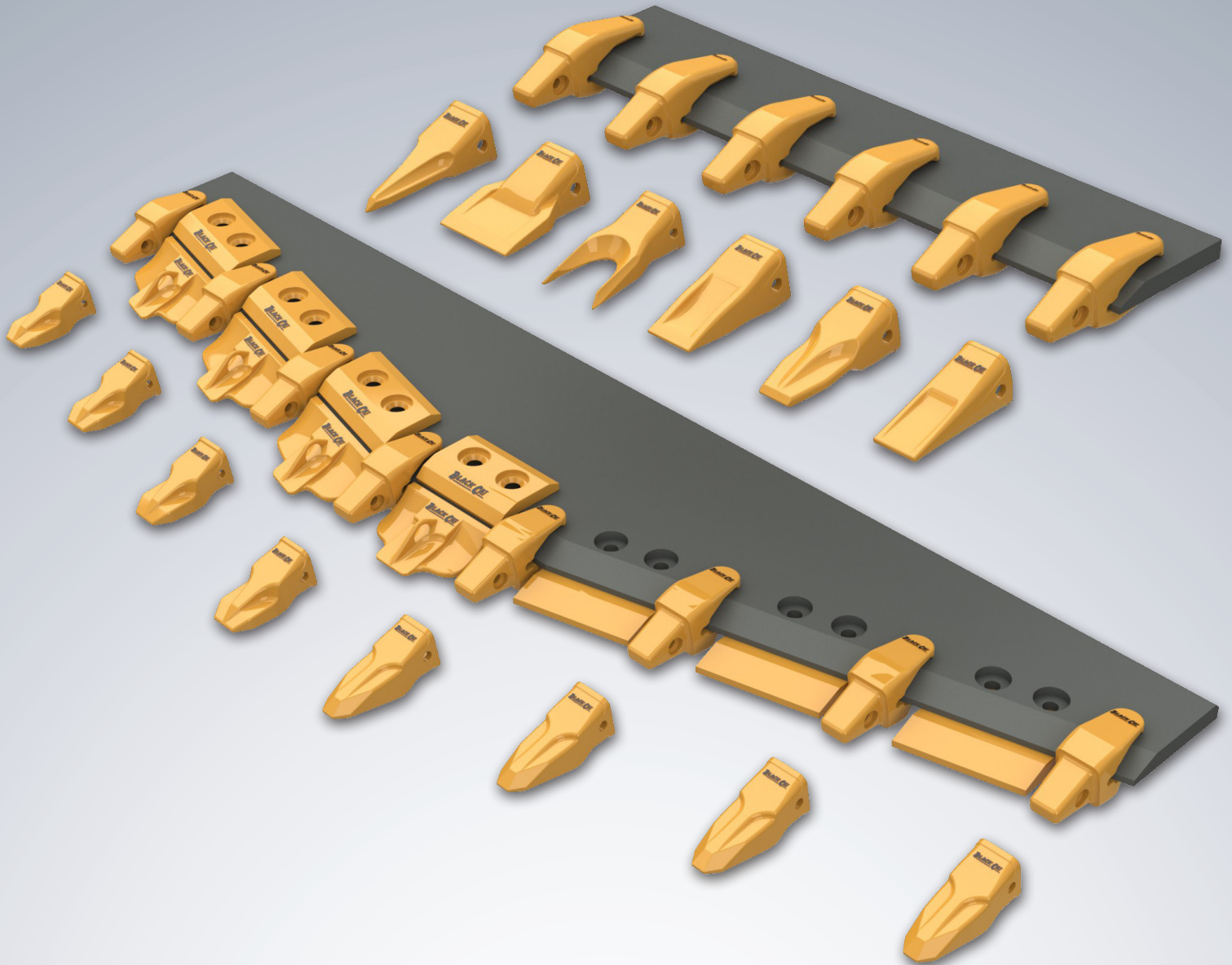


# ***Black Cat Teeth & Adapters***

*For Applications on Caterpillar® Equipment*

www.BlackCatBlades.com sales@blackcatblades.com Toll Free: 1.800.661.6666 Ph: 780.465.6666 Fax: 780.465.9595



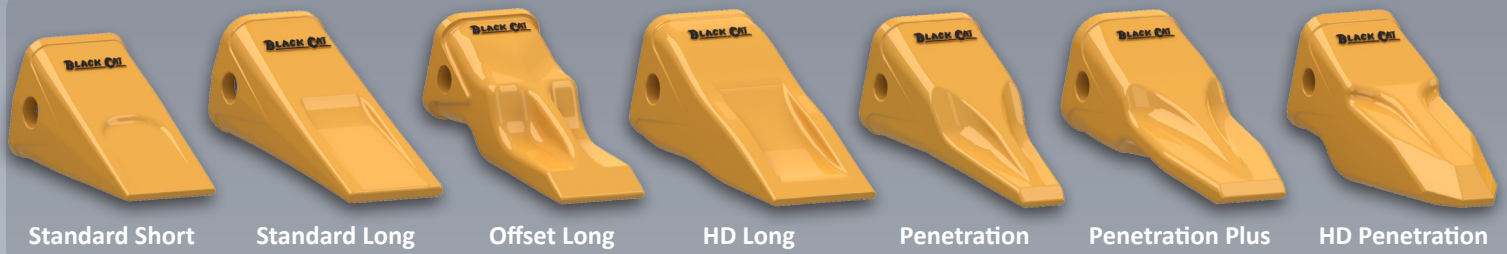
Black Cat Direct Replacement Teeth and Adapters are manufactured using our HighSpec Alloy steel and heat treated to our precise specifications. Computer design and analysis is employed in the development stages to ensure proper fitment and optimum strength for every part. Efficient processes and “state of the art” foundry practices allow for competitive pricing of quality parts. In house metallurgical staff and testing facilities ensure quality and consistency in all of our finished products. The results are quality wear parts that offer value to the customer every time.

215.0315

TEETH & ADAPTERS



Caterpillar® and other identities and/or trademarks referred to in this publication are the registered marks of the entities noted herein. The use of any trademarks of others than Black Cat Blades Ltd. are solely and exclusively for identification, informational, comparative, and descriptive purposes. Black Cat Blades Ltd. is not affiliated with any owner of such registered marks and does not make, use, or sell any products manufactured by any such entity identified in this publication.



## J Series Teeth

Tooth Style	J200		J225		J250		J300		J350		J400
	Part #	Weight	Part #	Weight	Part #	Weight	Part #	Weight	Part #	Weight	Part #
Standard Short	1U3201	2.7 lbs	6Y6221	3.9 lbs	1U3251	5.6 lbs	1U3301	9.0 lbs	1U3351	12.8 lbs	7T3401
Standard Long	1U3202	2.8 lbs	6Y3222	4.5 lbs	1U3252	6.2 lbs	1U3302	9.7 lbs	1U3352	12.9 lbs	7T3402
Offset Long					J250L	7.1 lbs	J300L	11.0 lbs	J350L	14.6 lbs	J400L
Heavy Duty Long			8E4222	5.8 lbs	9N4252	7.7 lbs	9N4302	12.9 lbs	9N4352	17.6 lbs	8E4402
Penetration	1U3209	2.4 lbs	6Y8229	4.6 lbs	9J4259	6.4 lbs	9J4309	9.0 lbs	9J4359	12.7 lbs	6Y7409
Penetration Plus					J250PP	10.2 lbs	183 5300	12.4 lbs	168 1359	16.0 lbs	168 1409
Heavy Duty Penetration					J250HP	15.7 lbs	135 9300	18.6 lbs	144 1358	25.9 lbs	135 9400
Heavy Duty Abrasion			J225HDAL	6.6 lbs	J250HDAL	9.6 lbs	J300HDAL	16.2 lbs	J350HDAL	22.5 lbs	J400HDAL
Tiger	J200 Tiger	3.2 lbs	J225 Tiger	4.7 lbs	J250 Tiger	6.3 lbs	J300 Tiger	10.3 lbs	J350 Tiger	14.3 lbs	J400 Tiger
VX Penetration											
Twin Tiger	J200 Twin	3.7 lbs	J225 Twin	5.0 lbs	J250 Twin	6.1 lbs	J300 Twin	12.3 lbs	J350 Twin	15.7 lbs	J400 Twin
Twin Tiger Narrow									J350TTD	14.8 lbs	
Flare Tooth	109 9200	3.5 lbs	186 3010	6.6 lbs	208 5254	8.8 lbs	107 3300	13.2 lbs	107 3350	19.8 lbs	107 3400
Rock Chisel							J300RC	13.0 lbs	J350RC	17.9 lbs	J400RC
Weld-On Adapter Nose	J200WN	2.1 lbs	J225WN	3.8 lbs	J250WN	5.0 lbs	J300WN	7.4 lbs	J350WN	10.2 lbs	J400WN
Pins & Retainers	Pin	Retainer	Pin	Retainer	Pin	Retainer	Pin	Retainer	Pin	Retainer	Pin
Standard Groove Pin	9W7112	4T0001	6Y3228	3G9609	9J2258	3G9609	9J2308	3G9609	9J2358	3G9549	7T3408
Radius Groove Pin	8E6208	8E6209		8E6259	8E6258	8E6259	107 3308	8E6259	8E6358	8E6359	
Heavy Duty Pin			132 4762	149 5733	132 4763	149 5733	132 4766	149 5733	114 0358	114 0359	116 7408

## Top Pin Teeth & Adapters

Part Number	Description	Weight
4K6936	Standard Long	3.4 lbs
4K6936SXC	Top Pin Tooth	3.5 lbs
4K6936Tiger	Top Pin Tiger Tooth	2.9 lbs
4K6984	Adapter for Top Pin	5.5 lbs
4K0034SXC	Top Pin Tooth	4.9 lbs
4K0034Tiger	Top Pin Tiger Tooth	5.2 lbs
4K0034RCM18	Adapter for Top Pin	6.0 lbs

## Unitooth

Part Number	Tooth Style	Weight	Model, Bucket Family
135 8203	Bolt-on Unitooth	6.3 lbs	438, 436, 428, 426, 416
132 4720	Bolt-on Unitooth	4.0 lbs	908, 906, 902
135 9390	Bolt-on Unitooth	3.6 lbs	300 Series
138 6410	Bolt-on Unitooth	2.5 lbs	

## Bolt On Loader Adapters

Part Number	Description	Weight	Thickness	Series	Model or Family	Bolt Diameter
6I9898	Center	63.2 lbs	1.75"	J400	980G, H, F, C	1.25"
6I8243/44	Corner RH/LH	77.9 lbs	1.75"	J400	980G, F	1.25"
1U1357	Center	43.7 lbs	1.75"	J350	980C, F, 977, 973C	1.25"
1U1358/59	Corner RH/LH	57.0 lbs	1.75"	J350	980, 973C	1.25"
3G3357	Center	43.3 lbs	1.50"	J350	977, 973, 972, 970, 966, 963, 962, 960	1.25"
8E5359/58	Corner RH/LH	59.4 lbs	1.25" - 1.50"	J350	977, 973, 970, 966, 960	1.25"
3G9307	Center	35.4 lbs	1.25"	J300	966C, 229, 225, E240	1.25"
4T4307	Center	30.9 lbs	1.25"	J300	963, 962, 960, 955, 950, 903, IT62, 38, 28, 26, 24, 14, 12	1.00"
1U0307	Center	28.5 lbs	1.00"	J300	963, 962, 960, 955, 953, 951, 950, 944, 943, 938, 936, 930, 928, 926, 924, 920, 916, IT62, 38, 28, 26, 24, 14, 12	1.00"
8E5309/08	Corner RH/LH	45.3 lbs	1.00" - 1.25"	J300	963, 962, 960, 955, 953, 950, 944	1.25"
1U0257	Center	22.5 lbs	1.00"	J250	953, 951, 943, 941, 939, 938, 936, 930, 928, 926, 924, 920, 916, IT62, 38, 28, 26, 24, 14, 12	1.00"
6I9251/50	Corner RH/LH	35.2 lbs	1.00"	J250	953, 951, 943, 941, 939, 938, 936, 935, 933, 931, 930, 928, 926, 924, 920, 916, IT12-28	1.00"
8E2184		5.20 lbs	0.875"	J200	438, 436, 428, 426, 416	0.63"



	J450		J550			J600		J700		J800		Tooth Style
Weight	Part #	Weight	Part #	Weight	Part #	Weight	Part #	Weight	Part #	Weight		
18.9 lbs	9W8451	23.6 lbs	9W8551	32.8 lbs							<b>Standard Short</b>	
20.8 lbs	9W8452	25.6 lbs	9W8552	40.8 lbs	616602	77.3 lbs	4T4702	97.3 lbs			<b>Standard Long</b>	
22.5 lbs	J450L	29.3 lbs									<b>Loader</b>	
25.4 lbs	9N4452	35.9 lbs	9N4552	59.9 lbs	7Y0602	101 lbs					<b>Heavy Duty Long</b>	
20.3 lbs	9W8459	21.8 lbs	9W8559	35.3 lbs	717609	61.7 lbs					<b>Penetration</b>	
26.0 lbs	159 0459	33.3 lbs	159 0559	53.2 lbs	159 0607	84.9 lbs	171 1709	110.1 lbs			<b>Penetration Plus</b>	
32.8 lbs	138 6451	45.2 lbs	138 6552	68.1 lbs	135 9600	130 lbs	135 9700	147.9 lbs	135 9800	202.4 lbs	<b>Heavy Duty Penetration</b>	
31.8 lbs	J450HDAL	48.9 lbs	J550HDAL	73.9 lbs	J600HDAL	130 lbs	J700HDAL	154.2 lbs	J800HDAL	206.6 lbs	<b>Heavy Duty Abrasion</b>	
23.0 lbs	J450 Tiger	29.4 lbs	J550 Tiger	35.9 lbs	J600 Tiger	78.6 lbs					<b>Tiger</b>	
					J600VX	75.4 lbs	J700VX	87.7 lbs	J800VX	124.9 lbs	<b>VX Penetration</b>	
26.2 lbs	J450 Twin	31.6 lbs	J550 Twin	41.1 lbs	J600 Twin	85.1 lbs					<b>Twin Tiger</b>	
	J450 TTD	32.0 lbs									<b>Twin Tiger Narrow</b>	
28.1 lbs	107 3450	36.4 lbs	107 3550	58.3 lbs							<b>Flare Tooth</b>	
26.2 lbs	J450RC	31.4 lbs	J550RC	49.7 lbs	J600RC	85.5 lbs					<b>Rock Chisel</b>	
15.0 lbs	J460WN	19.2 lbs	J550WN	29.0 lbs	J600WN	56.0 lbs					<b>Weld-On Adapter Nose</b>	
<b>Retainer</b>	<b>Pin</b>	<b>Retainer</b>	<b>Pin</b>	<b>Retainer</b>	<b>Pin</b>	<b>Retainer</b>	<b>Pin</b>	<b>Retainer</b>	<b>Pin</b>	<b>Retainer</b>	<b>Pins &amp; Retainers</b>	
7T3409			1U1558	3G9559	616608	616609	4T4708	4T4707	102 0101	101 2874	<b>Standard Groove Pin</b>	
8E8409	8E0468 (460)	8E0469 (460)	6Y8558	8E5559			9U19616	4T4707			<b>Radius Groove Pin</b>	
16 7409	114 0468 (460)	107 3469 (460)	107 3378	107 8559	113 9608	113 9609	113 4708	113 1809	134 1808	134 1809	<b>Heavy Duty Pin</b>	



**Top Pin  
Tooth & Adapter**



**Unitooth**



**Bolt on  
Loader Adapter**



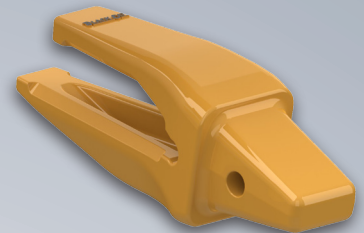
**Weld On  
Heavy Duty  
2 Strap  
Loader Adapter**

## Weld-On Heavy Duty 2 Strap Loader Adapters

Part Number	Description	Weight	Thickness	Series	Model or Family
618804	Center	209.2 lbs	4.00"	J800	994
618804 RH/LH	RH/LH Adapter	232.1 lbs			
222 7700	Center	185.2 lbs	3.50"	J700	992, 385
222 7700 RH/LH	RH/LH Adapter	185.2 lbs			
171 1704	Center	178.6 lbs	3.00"	J700	992
171 1705/06	RH/LH Adapter	177.9 lbs			
133 0704	Center	149.7 lbs	2.75"	J700	992
133 0705/06	RH/LH Adapter	155.2 lbs			
119 8604	Center	127.8 lbs	2.75"	J600	992
119 8605/06	RH/LH Adapter	130.2 lbs			
119 8604	Center	131.4 lbs	2.75"	J600	992
119 8605/06	RH/LH Adapter	134.5 lbs			
143 3114	Center	121.0 lbs	2.50"	J600	992, 990, 988
143 3115/16	RH/LH Adapter	123.9 lbs			
107 3554	Center	92.0 lbs	2.50"	J550	992, 990, 988
107 3555/56	RH/LH Adapter	98.0 lbs			
138 6554	Center	69.1 lbs	2.00"	J550	988, 980, 973
138 6555/56	RH/LH Adapter	69.1 lbs			
114 0464	Center	41.5 lbs	2.00"	J460	988, 980, 973
114 0465/66	RH/LH Adapter	41.7 lbs			
125 8404	Center	37.2 lbs	1.75"	J400	980, 973, 966
125 8405/06	RH/LH Adapter	36.0 lbs			
113 0354	Center	30.9 lbs	1.75"	J350	980, 973, 966
113 0355/56	RH/LH Adapter	31.2 lbs			
135 9354	Center	32.4 lbs	1.50"	J350	966, 972, 973
135 9355/56	RH/LH Adapter	32.1 lbs			

## Weld On 2 Strap Excavator Adapters

Part Number	Description	Weight	Thickness	Series	Model or Family
6I6604	Center	108.6 lbs	3.00"	J600	300 Series H, J, W
6I6604 RH/LH	RH/LH	113.8 lbs			
6I6604 - 85	Center	109.6 lbs	3.35"	J600	300 Series H, J, W
6I6604 - 85 RH/LH	RH/LH	119.0 lbs			
6I6554	Center	79.2 lbs	2.50"	J550	300 Series E, F, G, H, V, 245
6I6554SL	Solid Leg	82.7 lbs			
6I6554-24	Center	80.0 lbs	3.00"	J550	300 Series H, J, W
159 0464	Center	48.2 lbs	2.00"	J460	300 Series D
159 0464SL	Solid Leg	48.5 lbs			
159 0464-20	Center	50.9 lbs	2.50"	J460	300 Series E, F, G, H, V, 245
8E6464	Center	54.9 lbs	2.00"	J460	300 Series D, E, 8, 235, 229, 225
6I6404	Center	35.0 lbs	1.75"	J400	300 Series A, B, C, S, 318, 315, 231, 229, 225
6I6404-16	Center	36.2 lbs	2.00"		
6I6354	Center	26.0 lbs	1.57"	J350	300 Series A, B, C, S, 235, 231, 229, 225
3G8354	Center	19.7 lbs	1.50"	J350	229, 225, 219, 215
3G8355/56	RH/LH	19.5 lbs			
8E9490	Center	16.6 lbs	1.42"	J300	300 Series A, B, 315, 312, 311
3G6304	Center	17.9 lbs	1.25"	J300	300 Series B, 219, 215
3G305/06	RH/LH	17.2 lbs			
119 3253	Center	11.5 lbs	1.25"	J250	300 Series A, 312, 311, 307
6Y3224	Center	6.9 lbs	1.00"	J225	307, 446
119 3204	Center	4.4 lbs	1.00"	J200	416, 426, 428, 436, 438
119 3205	Center	4.4lbs	0.75"		



## Weld On Flush Mount Adapters

Part Number	Weight	Thickness	Series	Model or Family
8E0464	44.4 lbs	1.75" - 2.00"	J460	988, 983, 980, 973
8E0465/466	55.4 lbs			
107 3404	43.0 lbs	1.50" - 2.00"	J400	988, 980, 973
1U1354	30.1 lbs	1.25" - 1.75"	J350	980, 977, 973, 966, 960, 963, 245
1U1355/36	30.8 lbs			
1U1304	20.4 lbs	1.00" - 1.50"	J300	966, 963, 955, 953, 950, 943, 938, 936, 930, 928, 927, 926, 920, 235, IT62, 38, 28, 26, 24, 14, 12
1U1254	15.3 lbs	0.75" - 1.25"	J250	953, 951, 943, 941, 938, 936, 930, 928, 926, 920, 918, 916, 914, 426, 416, 214, 205, IT62, 38, 28, 26, 24, 14, 12



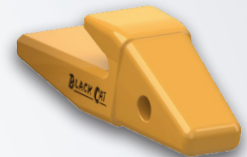
## Bolt On Scraper Adapters

Part Number	Weight	Series	Bolt Diameter	Model or Family
9J2307	27.4lbs	J300	1.00"	623, J621, J619, 615 (47Z1340-up)
9J8455	15.4 lbs	J250	0.75"	613



## Bottom Strap Adapter

Part Number	Weight	Thickness	Series	Model or Family
8J7525	3.5 lbs	0.50" - 0.75"	J200	935, 931, 438, 436, 428, 426, 416



Distributed By:

[www.BlackCatBlades.com](http://www.BlackCatBlades.com)

Caterpillar® and other identities and/or trademarks referred to in this publication are the registered marks of the entities noted herein. The use of any trademarks of others than Black Cat Blades Ltd. are solely and exclusively for identification, informational, comparative, and descriptive purposes. Black Cat Blades Ltd. is not affiliated with any owner of such registered marks and does not make, use, or sell any products manufactured by any such entity identified in this publication.

