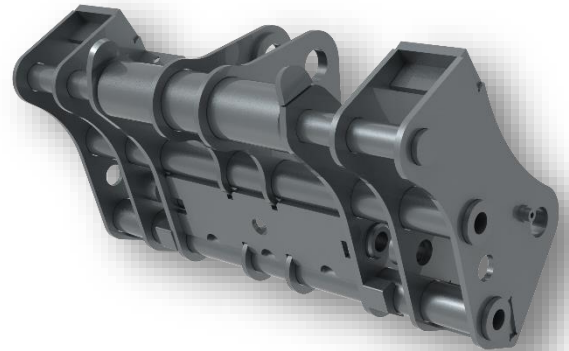




ESCO Now Offers Couplers and Forks for Wheel Loaders

**FITS MOST POPULAR UTILITY
SIZED MACHINES**



HYDRAULIC COMBINATION COUPLERS

Machine Class	WL20	WL30	WL40	WL50
Case	521	621	721	821
Cat	924	930	938	950/962
Deere	444	524/544	624	644/724
Doosan	DL200	DL220	DL250	DL300/350
Hyundai	-	HL940	HL955	HL960
JCB	416/417	426/427	436/437	456/457
Kawasaki	-	65Z	70Z	80/85Z
Komatsu	WA180/200	WA250/270	WA320	WA380
Volvo	L50/60	L70	L90	L110/120

Electric over hydraulic actuation kit required using less than 3,000 psi pilot pressure. Hydraulic actuation kits are not OEM specific. Compatible for JRB or Volvo hookup. Other hookups are available on request.

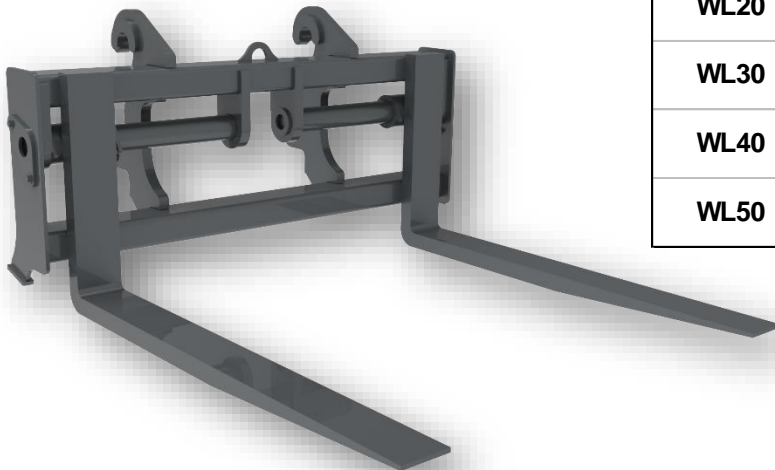
COUPLER FEATURES & BENEFITS

- Superior visibility with minimal extension of the loader arms
- Floating double acting cylinder for better lock pin alignment
- Locking pins allow up to 10° of oscillation

Offering reflects JRB, Volvo, Fusion or IT-28 hooks. Direct pin forks quoted upon request.

UTILITY NON-HYDRAULIC PALLET FORKS

Machine Class	Carriage Width (in.)	Tine Dimensions (in.)	Tine Capacity at Load Center (lbs.)
WL20	69.75	2.25 X 5 X 48	15,200
	69.75	2.25 X 5 X 60	12,160
WL30	69.75	2.25 X 5 X 48	15,200
	69.75	2.25 X 6 X 60	14,560
WL40	69.75	2.25 X 6 X 48	21,400
	69.75	2.25 X 6 X 60	17,120
WL50	69.75	2.25 X 6 X 48	21,400
	69.75	3.00 X 6 X 60	22,702



FORKS FEATURES & BENEFITS

- Low profile frame to increase visibility
- Manual side shift tines include individual locking mechanism
- Dual hanger bars for increased visibility